

**IN THIS ISSUE:**

- Prevent
- The Dark Web
- Remote Education
- Sexual Abuse Enquiry
- Safer Internet Day 2023
- Harmful Sexual Behaviour
- Tavistock
- GamCare

PREVENT

Sally Green our Home Office link has communicated that the current threat level remains at substantial meaning an attack is likely. This is a very busy time of year and public places are likely to be very crowded. Please consider your personal security and remain vigilant.

Schools will continue to be a pivotal part of the Prevent referral process, as your engagement is key to ensuring information is shared to ensure that we safeguard individuals at risk of radicalisation. Please note that from December 2022 referrals will be the responsibility of Counter Terrorism Policing South East (CTPSE), there will be no difference in the referral process just CTPSE now rather than Dovetail.

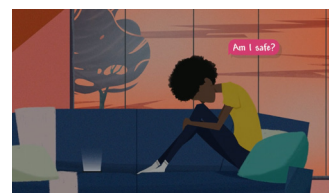
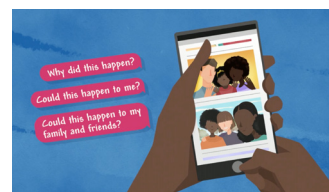
Dover Terrorist Attack

You will no doubt be aware of the news reporting surrounding the distressing incident on Sunday 30th October in which an individual threw incendiary devices at a Home Office immigration centre in Dover. This incident has now been declared as a Terrorist Attack driven by a Right-Wing Ideology. We know that news coverage and social feeds concerning this incident may be upsetting and worrying, especially for children, young people and families who live nearby. We have had excellent discussions in PSHE and breakfast club on this area of concern How to Help Students Talk about the News. Two websites that Sally recommends can be found below, these can be used by parents or teachers when discussing topics that can be worrying.

Advice if you are upset by the news-
[BBC- Upset By The News](#)

If you are upset by the news, it is important to know that you are not the only one and it is ok to have those feelings.

[Educate Against Hate](#)



The DfE has just offered guidance on how to self-evaluate our Prevent approach whole school. It reflects learning since the implementation of the Prevent duty in 2015 under section 26 of the Counter Terrorism and Security Act 2015. This will take place in the New Year and any areas that we need to look at further will be shared with staff.

Making A Prevent Referral**Did You Know**

Prevent referrals can be submitted with or without consent. DfE Guidance specifies that you should be 'open and honest with the individual (and/or their family) from the outset about why, what, how and with whom information will, or could be shared, and seek their agreement, unless it is unsafe or inappropriate to do so'. The information sharing decision (the referral) should be based on consideration of the safety, well-being of the individual and risk and threat to others who may be affected by their actions. Where consent isn't sought the decision for not doing so should be recorded. Therefore, if appropriate, when discussing your concerns with the parents, you can advise that Prevent is a safeguarding process that may look at interventions to assist their child. This is subject to case-by-case risk assessment.


TRAINING- THE DARK WEB

Our colleagues in FE/HE are offering **FREE TRAINING** around the online space and platforms. This session covers: Brief intro to Dark Web and encryption. An overview of multiple online platforms. Examples of concerning content on each platform. Discussion around when online activity may become a concern. You can book on yourselves on [here](#)





There should be no safe space for terrorists online but unfortunately our young people come across disturbing and upsetting images online, please encourage them to download the iReportit APP that is compatible with Android and IOS and anonymously report disturbing online content.

An interactive guide for parents has also been released. Use the QR code in the image to access lots of information on how to keep your child safe:



The pandemic has meant that children are spending more time than ever before learning and socialising online. Parents are juggling new technology alongside working and navigating the risks children face online. **Scan the QR code below to access the full interactive guide** which has links to resources, advice, and information to help you:

- Understand the risks and issues.
- Know where to get help.
- Find resources.
- Develop practical strategies.
- Start conversations.
- Build your child's digital resilience.

REMOTE EDUCATION

Remember that if you are teaching children from your own homes or any other shared space (for example, if school access is restricted and teachers and children cannot attend in person) you should aim to find a quiet space to communicate with pupils, parents or carers. When using Teams or Zoom ensure you are using a neutral or plain background.

As a school we should now start moving to having cameras on and here's why;

Interaction: Both for students and teachers it is really important to be able to see each other's faces. I think we have all learnt this year just how social we are as human beings. Online does not match offline interaction, but it's something!

Engagement: If the cameras are off, how can you ensure students are engaged in your lesson? For all you know, they are playing Xbox in the background or scrolling through Instagram.

Wellbeing: I know that most of you did not go to university and study for a year, to then present a lesson in front of black screens. It would take a very strong character to not find this slightly sole destroying.

The [SWGFL](#) has some excellent advice on this topic, for our remote teachers this is a must visit!



SEXUAL ABUSE ENQUIRY

At the end of October, the Independent Inquiry into Child Sexual Abuse published its concluding Report, which requires urgent action to ensure children are better protected from sexual abuse. This report was commissioned following the Jimmy Saville offences and other high profile child abuse cases going back several years. It has taken many more years to be completed and the full report is available to read on the links provided. For schools, the following excerpt is of particular interest: Despite 20 years of enhanced focus on safeguarding, schools are not as safe for children as they should be, and children's interests do not always come first when allegations or concerns of sexual abuse arise. You can read more about the short-comings in the current systems of protections such as DBS checks. The inquiry has made 20 recommendations, 1 of which could introduce criminal proceedings for failing to report an allegation of sexual abuse – watch this space for any updates.

SAFER INTERNET DAY 2023

[Safer Internet Day 2023](#) will take place on the 7th of February 2023, and the theme for next year has just been announced by the UK Safer Internet Centre as: 'Want to talk about it? Making space for conversations about life online'. The aim of the event and accompanying education resources will be to champion the voices of children and young people, and encouraging them to shape the online safety support that they receive, with a particular focus on the following questions:

- What issues really matter to children and young people?
- What changes do they want to see?
- How can we all work together to advocate for them moving forward?



Want to talk about it?

Making space for
conversations
about life online

Register support and share your activities on the day [here](#)

HARMFUL SEXUAL BEHAVIOUR SUPPORT

Safety Planning in Education: A guide for professionals supporting children following incidents of harmful sexual behaviour. The Centre of expertise on child sexual abuse has published a new guide to support education professionals' knowledge, skills and confidence to understand and respond to incidents of harmful sexual behaviour and ensure the safety of all children and young people is addressed. It is split into two sections: Part A looks at the key actions for a school when an incident of harmful sexual behaviour has occurred, including a safety plan template for recording and reviewing arrangements, whilst Part B focusses on broader practical advice such as how to communicate with children, and their parents, and an appendix with useful links and resources.

The Centre of expertise on child sexual abuse
[new guide](#)

The logo for the Centre of expertise on child sexual abuse, featuring a colorful geometric pattern of triangles in shades of green, blue, and purple. The text 'Centre of expertise on child sexual abuse' is overlaid in white, bold, sans-serif font.

Centre of
expertise
on child
sexual abuse

FREE TRAINING- TAVISTOCK WEBINAR

[Mental health in schools: leadership and wellbeing in secondary settings: Tuesday 25 April 2023: 4 – 5pm.](#)

In this webinar, Heather Daulphin, will explore the range of mental health and wellbeing challenges presented in secondary settings and how students, and staff, can be supported with these.

Any issues with booking etc., please contact Nicola - NPrince@Tavi-Port.nhs.uk

GAMCARE

GamCare's Young People's Service GamCare provides information, advice and support for anyone affected by gambling harms. Although most gambling is illegal for under 18s, the latest Young People and Gambling Survey shows that approximately 350,000 (11%) of 11-16-year-olds spent their own money gambling in the previous week – that's more than those who smoked (6%) or took drugs (5%). More boys than girls gamble, and as many as 55,000 young people nationally can be classified as experiencing harm from their gambling. The report found that the most common form of gambling among the 11-16 age group was betting with friends, but buying scratch cards and lottery tickets, playing fruit or slot machines, and gambling online, also feature. GamCare runs a specific website for young people, called the BigDeal, and have launched a dedicated support service tailored to the needs of young people. The Young People Service (YPS) can support anyone aged 18 and



**Problem
Gambling
Support**

in the UK who is either at risk of, or is experiencing, harms because of gambling. This can be if they are gambling themselves, or if they are affected by someone else's gambling. The service is free, flexible and confidential and offers information, advice and self-help tools tailored to each young person's needs to ensure that every young person worried about gambling is listened to and fully supported.

Professionals concerned about a young person experiencing gambling-related harm can also get in touch with the Young People Service for advice. The primary referral routes are:

- Self-referral via the form on the [BigDeal website](#) - parents/carers and professionals can also refer a YP with their consent
- Via the gambling helpline available 24/7: 0808 8020 133. They can also give advice and guidance, and triage and send referrals straight through to adult or YPS
- Via NetLine: <https://bigdeal.org.uk/> (Live chat button).
- By contacting the YPS directly on youngpeople-service@gamcare.org.uk or 0203 092 6964 (9am-8pm Monday-Thursday; 9am-5pm Friday). Outside these hours, call the National Gambling Helpline for free on 0808 8020 133 (24 hours, every day).

Panorama - Why Kids Miss School As the description for this TV programme states 'Covid lockdowns have left a legacy of persistent absence amongst some students, and schools are under pressure to get them back through the gates.' This [programme](#) follows some students for three months to see how best to deal with the issue. The link between attendance and safeguarding is clear - a useful watch.



Worried about a child? Don't assume that someone will make that call. You could help save a child's life, call our reporting line on 03000 411 111. If a child is in immediate danger, call 999