

INFORMATION  
PACK



Staplehurst



The  
Rosewood  
School

# Contents



- Introduction to TRS Staplehurst
- Meet the team
- Timetable
- Curriculum
- Personal Finance and PSHE
- Reintegration
- Careers
- Form Time
- Lunchtime clubs
- Pupil Voice
- Rewards

# Introduction to TRS Staplehurst

Welcome to The Rosewood School, Staplehurst.

At TRS we aim to provide a supportive, educational pathway for our pupils, supporting a continuum of education in a calm and nurturing environment. This is with the aim of successfully reintegrating them back to their mainstream school or alternative education provision.

All pupils at TRS Staplehurst are resident admissions at the Kent and Medway Adolescent hospital and we work closely with the health team to support their educational needs.

At TRS Staplehurst, our students follow key stage 3, 4 and 5 curriculums and we also support our young people who are not in education, employment or training. We offer a broad and balanced curriculum to ensure they have as many opportunities as possible to succeed along their chosen educational pathway.

The TRS Staplehurst team are here to support young people in education whilst in hospital and pupils are encouraged to speak with any of us if they have any questions.



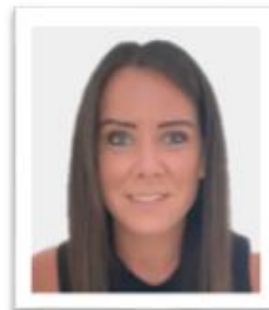
# Meet the team...



T Hamer  
Executive Headteacher



R Sharma  
Head of School



J Smith  
Operations Manager



C Glen  
Science Teacher / Equine  
Facilitated Learning  
Practitioner



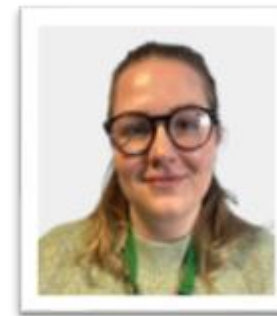
D Bubier  
English Teacher



J Jacobs  
Maths Teacher



S Eade  
Reintegration HLTA



A Menditta  
Teaching Assistant



B Liston  
Careers Advisor



# Education Timetable

TIME	MONDAY		TUESDAY		WEDNESDAY		THURSDAY		FRIDAY
9.30 – 9.40	Community meeting		Community meeting		Community meeting		Community meeting		Community meeting
9.40 – 10.00	Reciprocal Reading/ Poetry Analysis		Topical Talk		Reciprocal Reading		Reciprocal Reading		Tutor time/ Topical Talk
SESSION 1 10.00 – 11.00	PSHE PHOENIX 1&2	ANIMAL EDUCATION TRS	SCIENCE AQUA 2 PHOENIX 2	POST 16 AQUA 1 PHOENIX 1	MATHS AQUA 2 PHOENIX 2	POST 16 AQUA 1 PHOENIX 1	MATHS AQUA 1&2	OPTIONS/ POST 16 PHOENIX 1&2	PUPIL VOICE / OPTIONS AQUA 1&2
<b>BREAK</b> 11.00 – 11.30									
SESSION 2 11.30 – 12.30	PSHE AQUA 1&2	ANIMAL EDUCATION TRS	SCIENCE AQUA 2 PHOENIX 2	POST 16 AQUA 1 PHOENIX 1	PERSONAL FINANCE AQUA 2 PHOENIX 2	POST 16 / PERSONAL FINANCE AQUA 1 PHOENIX 1	MATHS PHOENIX 1&2	OPTIONS / POST 16 AQUA 1&2	PUPIL VOICE / OPTIONS PHOENIX 1&2
<b>LUNCH</b> 12.30 – 13.00									
13.00 – 13.45	Lunchtime Activities		Lunchtime Activities		Lunchtime Activities		Lunchtime Activities		Lunchtime Activities
SESSION 3 13.45 – 14.45	ENGLISH PHOENIX 2	POST 16 PHOENIX 1	ENGLISH AQUA 2	POST 16 AQUA 1	DBT/THERAPY  TRS CPD 3.00pm		CREATIVE / POST 16 PHOENIX 1&2		OUTDOOR / OPTIONS AQUA 1&2
SESSION 4 14.45 – 15.45	ENGLISH AQUA 2	POST 16 AQUA 1	ENGLISH PHOENIX 2	POST 16 PHOENIX 1			CREATIVE / POST 16 AQUA 1&2		OUTDOOR / OPTIONS PHOENIX 1&2

# Curriculum

At TRS Staplehurst we ensure that we provide a broad and balanced curriculum, with individualised plans for each pupil, dependent on their educational need.

The timetable features core and non-core subjects. Alongside Maths, English, Science and option units, we offer AQA Unit Awards, Food Technology, Horticulture and PSHEE. We also provide pupils with opportunities to gain cultural capital through a variety of experiences. We work with mainstream schools/ colleges and alternative provisions to enable a continuum of education whilst in hospital with the aim to enable successful reintegration back to education.

## **Organisation of teaching groups**

Teaching groups within TRS Staplehurst are split between key stages, with Key Stage 3 and 4 in one group and Key Stage 5 in another group. This is flexible however, depending on the need and educational pathway.

On admission we will ask pupils to complete initial assessments, these tests are conducted with our classroom teaching assistants. Some tests are repeated after 6 weeks to assess their progress.

Lucid Exact – comprehensive assessment of literacy age 11-24

Lucid Rapid – dyslexic screening

**Key Stage 3 & 4** complete baseline assessments in English, Maths and Science and initial pupil learning checklists for option subjects.

TRS Staplehurst teachers mark the work they set. Completed work is also returned to mainstream schools for marking and feedback.

# Personal Finance

All students at Key stage 3 and 4 complete AQA Unit Awards in Personal Finance. This subject enables students to gain a better understanding of budgeting, spending and financial current affairs. As a subject, this also supports numeracy.

# PSHE

Personal, social, health and economic (PSHE) education is an important and necessary part of all pupils' education. PSHE lessons take place every Monday afternoon.

Examples of topics covered are:

Personal (i.e. Anti-bullying / careers / empathy)

Social (i.e. Identity, diversity and stereotypes / Black Lives Matter / Children in Need)

Health (i.e. Addiction / sexual health / Hygiene)

Economic (i.e. Public spending / General election / Consumer rights)

# Reintegration



At TRS we have a Reintegration Team who support pupils back into an Education provision. This can be their mainstream school, alternative school, college or Apprenticeship.

When the Health Team confirm the pupil is well enough to return to a mainstream school setting, a member of the Reintegration Team will arrange an initial meeting with the Education Provider and pupil, to discuss and create a bespoke reintegration plan to successfully return to school.

At TRS, we recognise that education is pivotal to many pupils recovery.







## Careers

We support students to explore their ideas for the future and look at possible options such as College, 6th form, apprenticeships, training and work. We can offer advice and support to complete applications, CVs and are very happy to speak with parents/carers and others working with the young person. We mainly work with those at points of transition; Y11, 12 and 13 students or those without a current place in education or employment but can offer support to younger pupils too.



## Form Time

Every weekday from 9.40 – 10.00 we have form time. This is a chance for staff and pupils to get together before lessons, make announcements, discuss current affairs, take part in quizzes or activities, group reading and generally set ourselves up for the day.



## Lunchtime Clubs

Our TAs offer a variety of lunch time clubs including:

Gardening, board games, grounds walks, photography, art, Reading



## Pupil Voice

Pupil Voice takes place every Friday at 11.30. This is a chance for pupils to have their say on TRS Staplehurst and voice any comments or suggestions.



## Rewards

Pupils are given a reward card on admission to education and rewarded with merits when they achieve, this can be academically, through good attendance and contributions to lessons. When their reward card is complete they will receive a £10 Love2Shop voucher to spend at their leisure.



# TRS LITTLE FARM

Interactions with animals has long been recognised as a strategy for boosting wellbeing and improving mental health. There is much research looking into both the physical and emotional benefits of spending time in the outdoors working alongside nature. At our Staplehurst site, TRS have installed an animal paddock that will enable our students to spend time outdoors, tending to the daily care of our visiting sheep, ponies and donkeys. Taking responsibility for the care of animals can provide a focus away from the traditional classroom, improving outlook and reducing anxiety. TRS Little Farm also offers our students access to facilitated animal-assisted learning opportunities; ground-based exercises designed to help practice mindfulness with the animals, which in turn can help build self-confidence, improve communication skills and support cognitive functioning.





# BEYOND THE CLASSROOM SCHOOL TRIPS / EXTERNAL VISITORS

Throughout the year we organise visits from external agencies and local educational trips out. Some examples are as follows:



The Blackshed  
Gallery

Theatre / Cinema

The Cranbrook  
Museum



THE ROSEWOOD SCHOOL  
KENT & MEDWAY ADOLESCENT HOSPITAL  
CRANBROOK ROAD  
STAPLEHURST  
TN12 0ER



[enquiries-staplehurst@trs.kent.sch.uk](mailto:enquiries-staplehurst@trs.kent.sch.uk)

T: 0300 300 1717

